



5 Cherry Way, Horton, Slough, SL3 9PU
£425,000

 **HORLER**

5 Cherry Way, Horton, Slough, SL3 9PU

This beautifully presented three-bedroom end-of-terrace home in the charming village of Horton offers an inviting and comfortable living environment. The property boasts a bright and airy living and dining area, ideal for both relaxing and entertaining guests.

A well-appointed kitchen is complemented by the convenience of a downstairs WC, making the home particularly well suited to modern family life.



Upstairs, you will find three generously sized bedrooms, each offering ample space and comfort. The beautifully tiered garden, which backs onto the serene Colne Brook, provides a tranquil outdoor retreat, perfect for enjoying sunny afternoons or hosting gatherings.

This home is perfectly situated within walking distance to the local village, ensuring easy access to shops and amenities. Additionally, it boasts excellent transport links, making commuting a breeze. Families will appreciate the property's catchment area for local schooling, providing quality education options for children.

Furthermore, the property is equipped with a state-of-the-art solar panels and battery storage at the rear, promoting energy efficiency and sustainability. . Off-street parking for two vehicles adds to the convenience of this lovely home.

In summary, this end of terrace house on Cherry Way offers a wonderful blend of comfort, style, and practicality, making it an ideal choice for families or anyone looking to settle in a vibrant community. Don't miss the opportunity to make this charming property your new home.

General Information:

Tenure: Share of Freehold

Lease Length remaining: 962 years

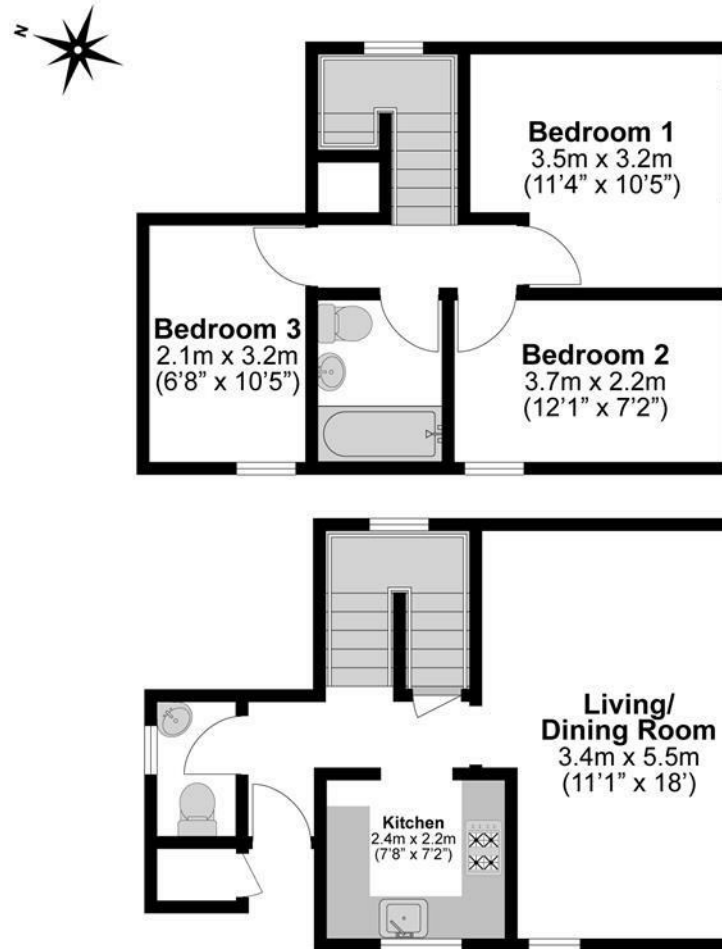
Service Charge: Approx. £36 pcm

Legal Note:

Although these particulars are thought to be materially correct their accuracy cannot be guaranteed and they do not form part of any contract.







**Illustrations are for identification purposes only,
measurements are approximate, not to scale.**